



Kentucky Christian University

**OCTOBER 2019
ORGANIZATIONAL CHART**



OCTOBER 2019 ORGANIZATIONAL CHART

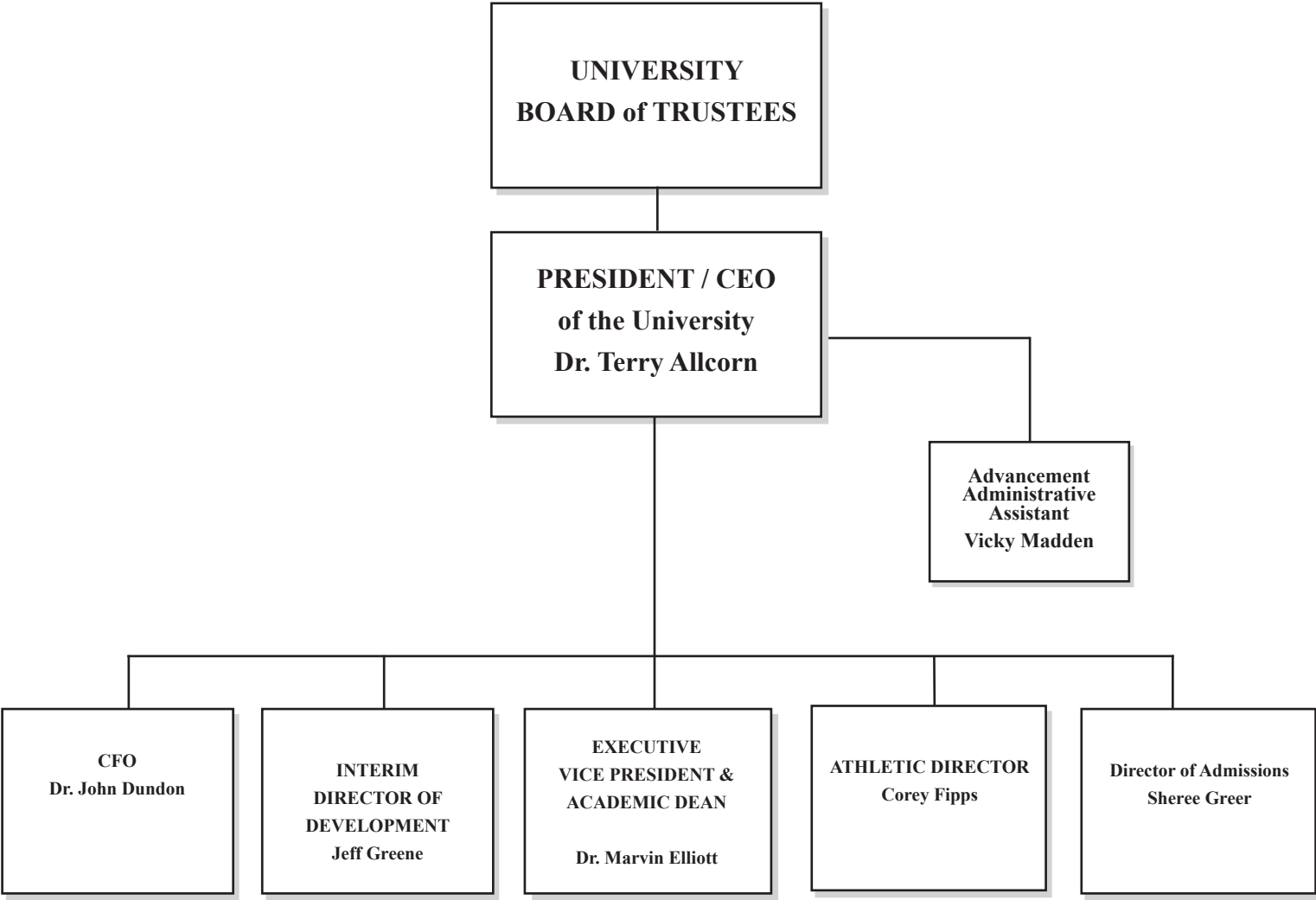
Table of Contents

Administrative Offices	3
Office of the Vice President of Enrollment Services	4
Office of Executive Vice President (Business & Finance).....	5-6
Office of the Executive Vice President & VP of Academic Affairs - Director of Student Services	7
Office of the Director of Advancement	8
Office of the Executive Vice President & VP of Academic Affairs - Faculty Deans, Schools, Departments, and Committees	9
Office of the Executive Vice President & VP of Academic Affairs - Faculty, Schools, Administrative Assistants	10-11
Office of the Executive Vice President & VP of Academic Affairs - Graduate School.....	12
Athletic Director & All Coaches	13

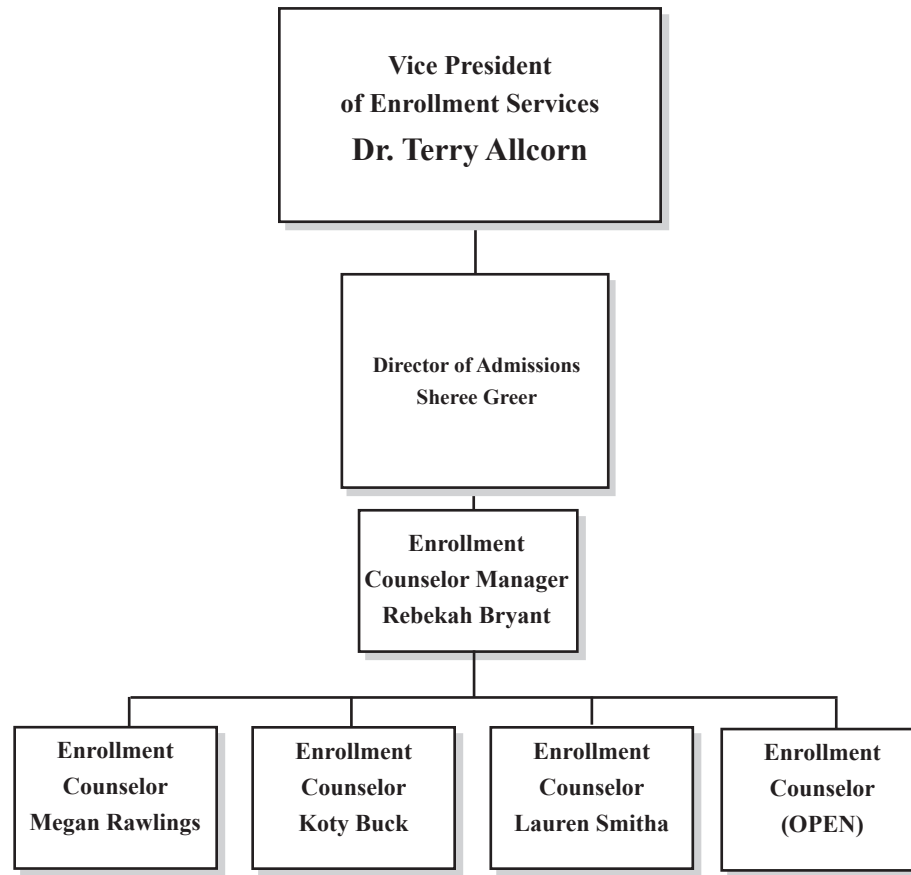
KENTUCKY CHRISTIAN UNIVERSITY

ORGANIZATIONAL CHART

Administrative Offices



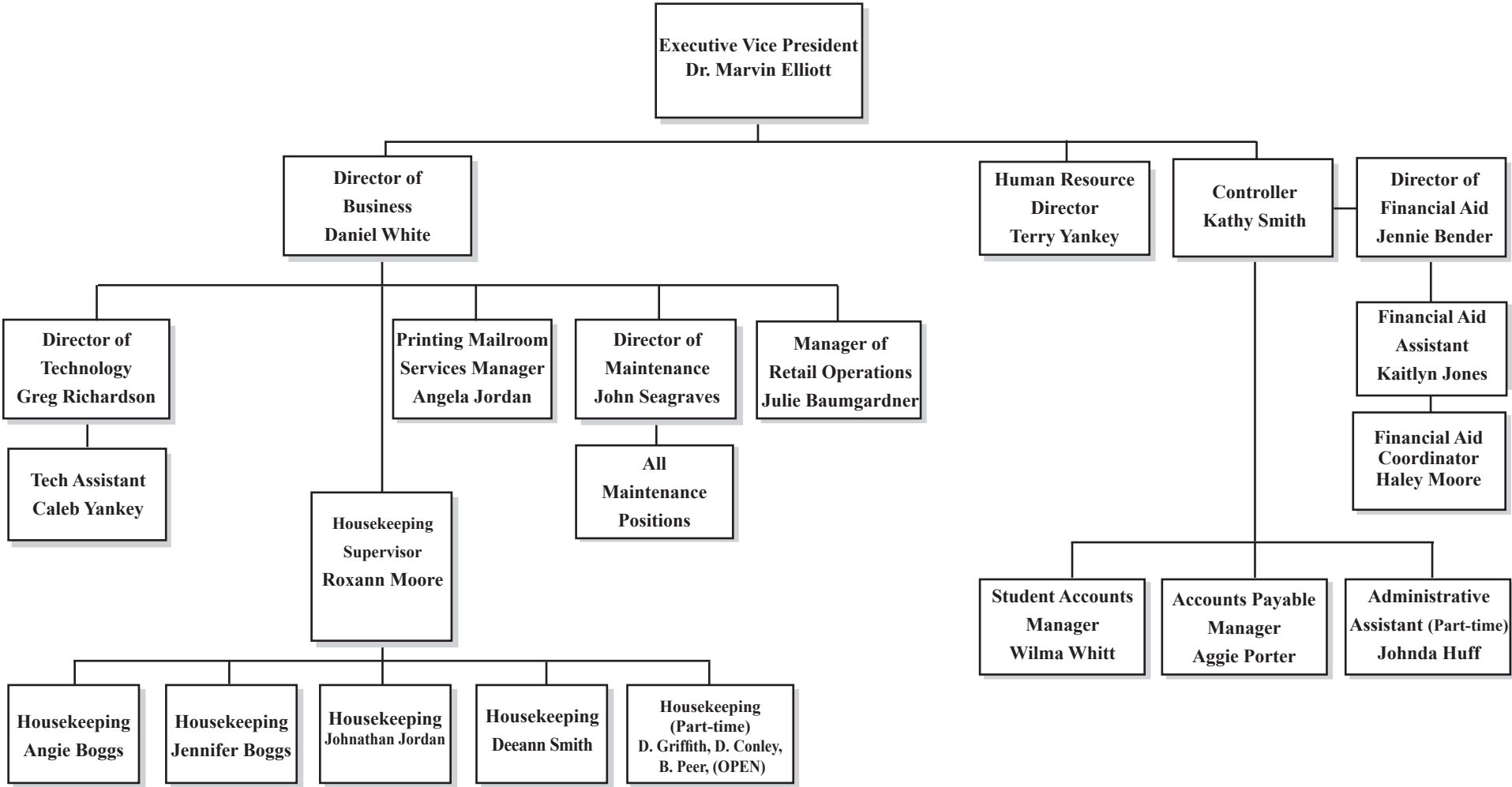
KENTUCKY CHRISTIAN UNIVERSITY
ORGANIZATIONAL CHART
Office of the Vice President of Enrollment Services
Director of Admissions



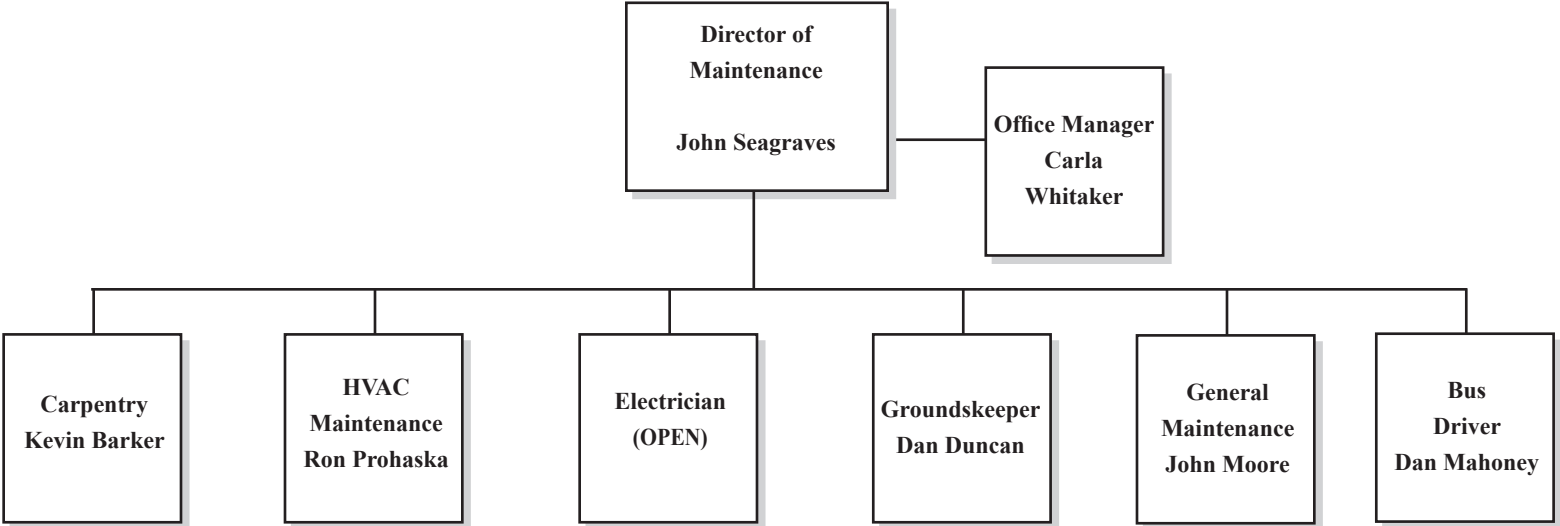
KENTUCKY CHRISTIAN UNIVERSITY

ORGANIZATIONAL CHART

Executive Vice President



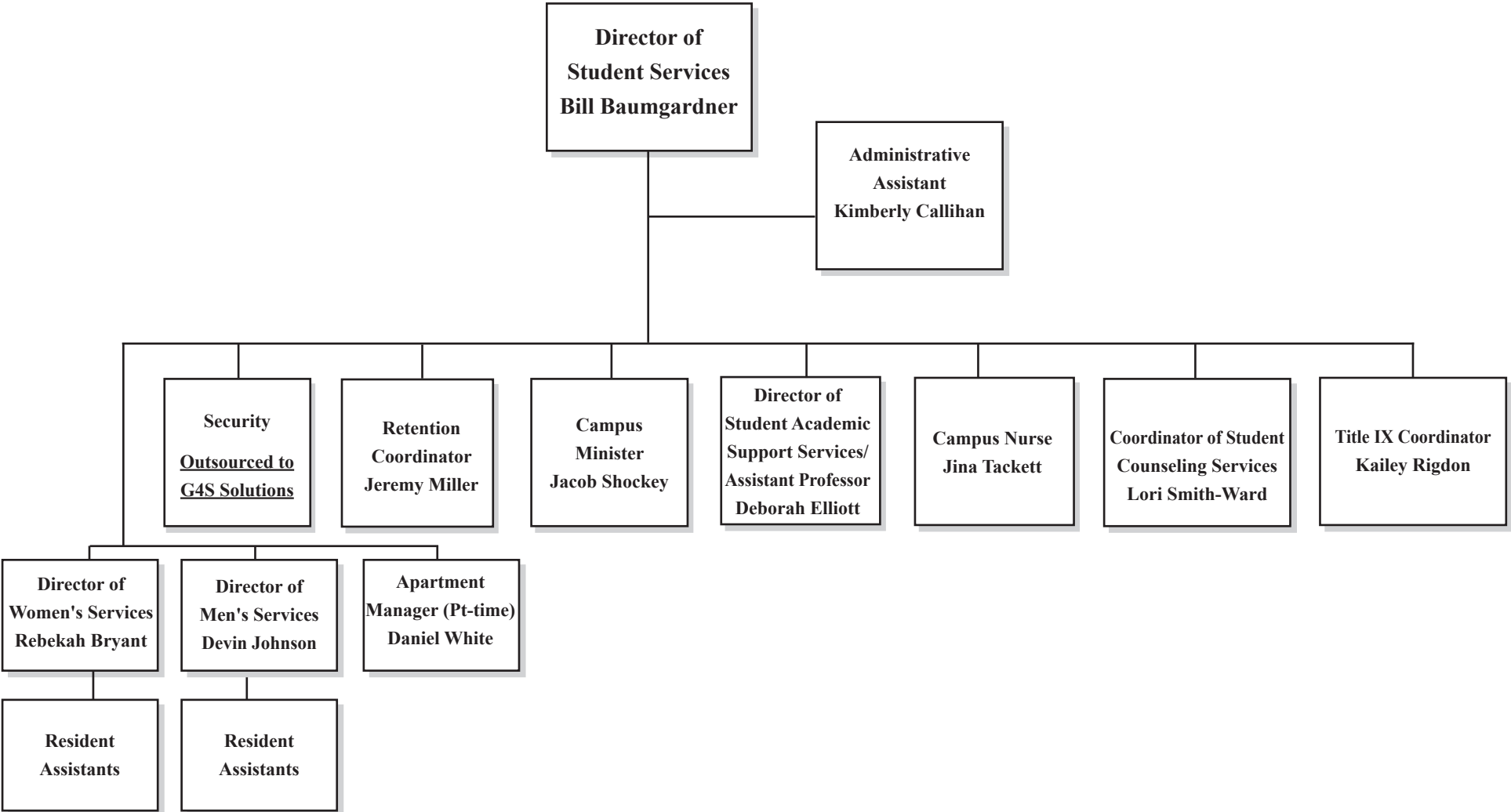
KENTUCKY CHRISTIAN UNIVERSITY
ORGANIZATIONAL CHART
Executive Vice President
Director of Maintenance



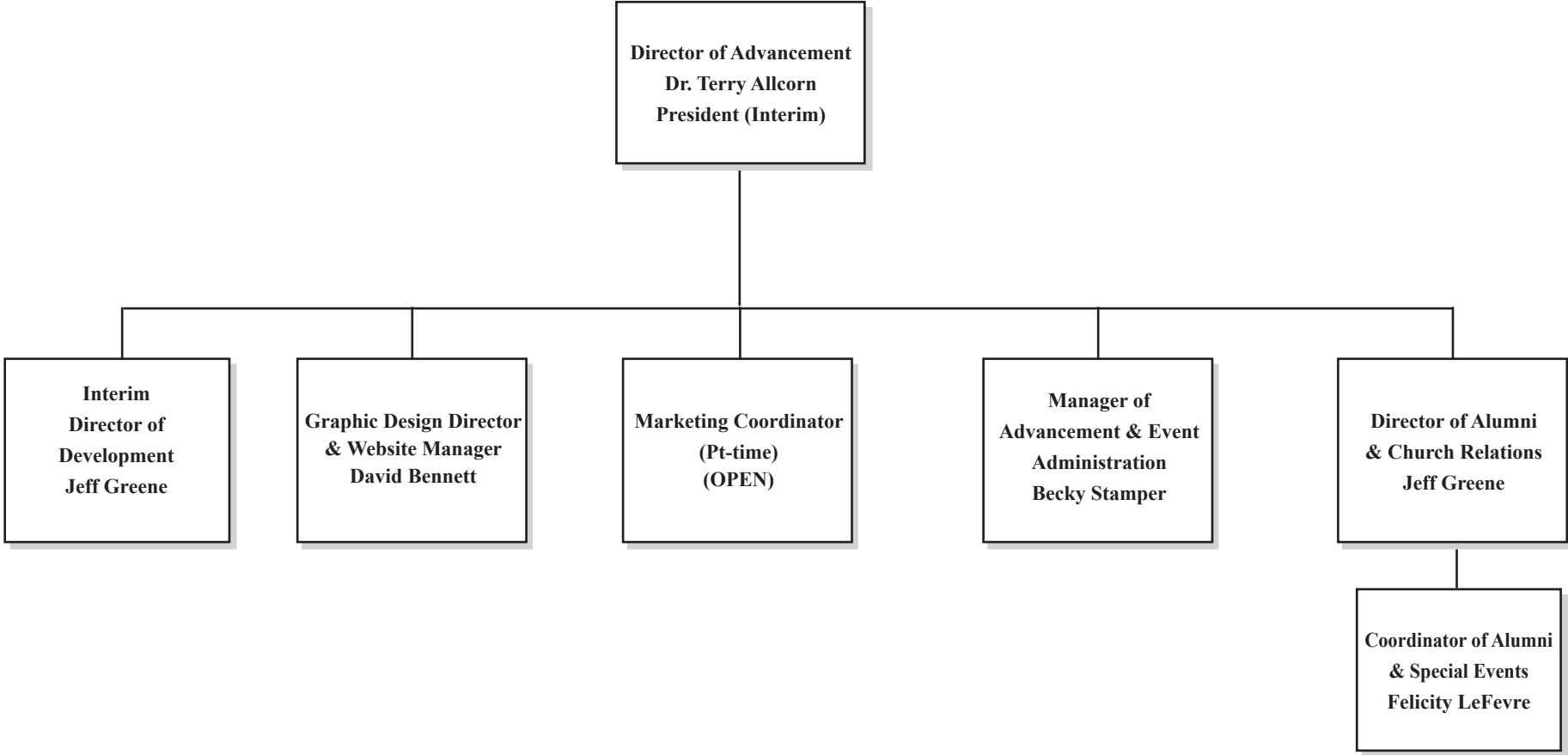
KENTUCKY CHRISTIAN UNIVERSITY

ORGANIZATIONAL CHART

Executive Vice President Director of Student Services

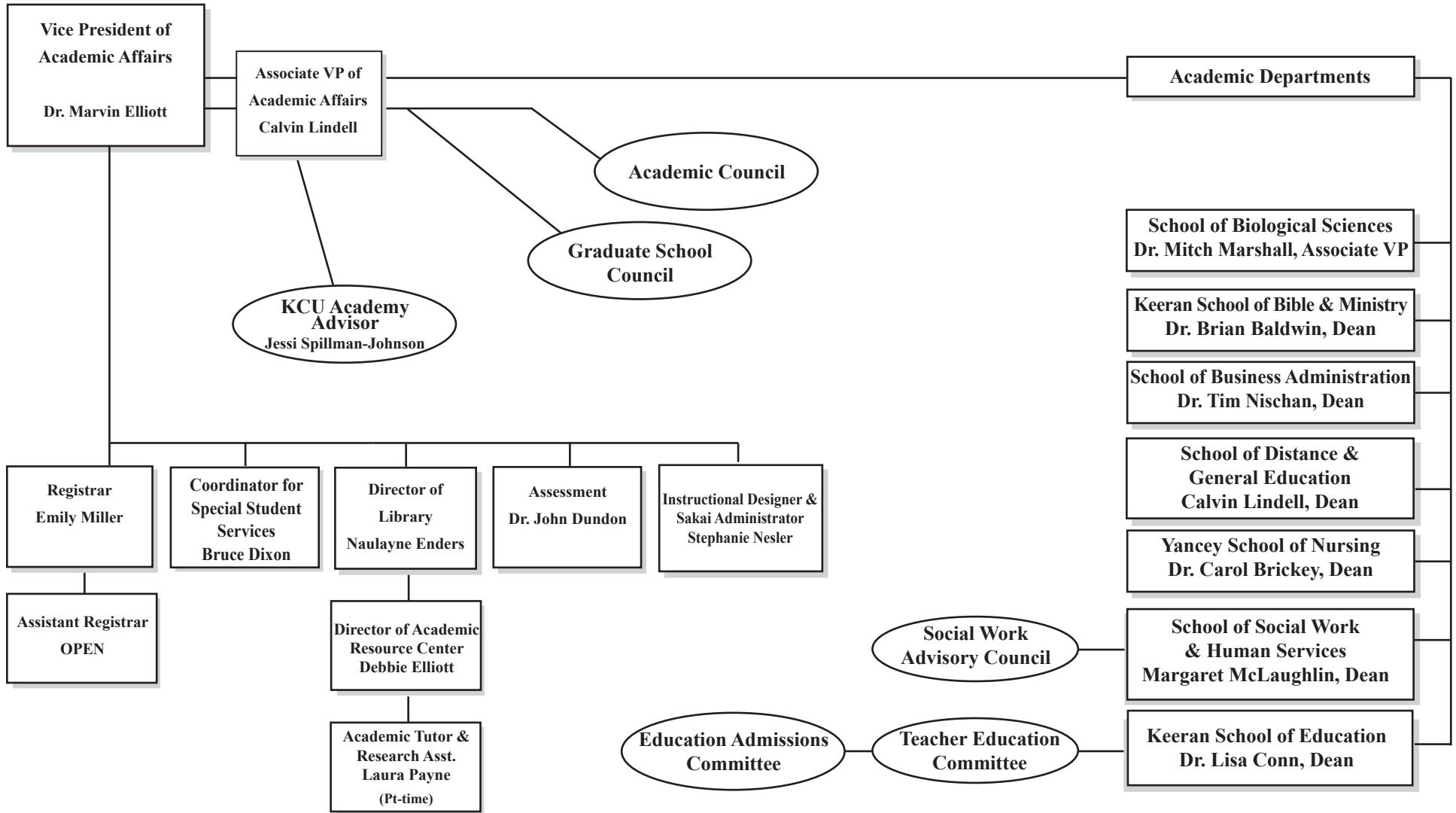


**KENTUCKY CHRISTIAN UNIVERSITY
ORGANIZATIONAL CHART
Office of Director of Advancement**



KENTUCKY CHRISTIAN UNIVERSITY ORGANIZATIONAL CHART

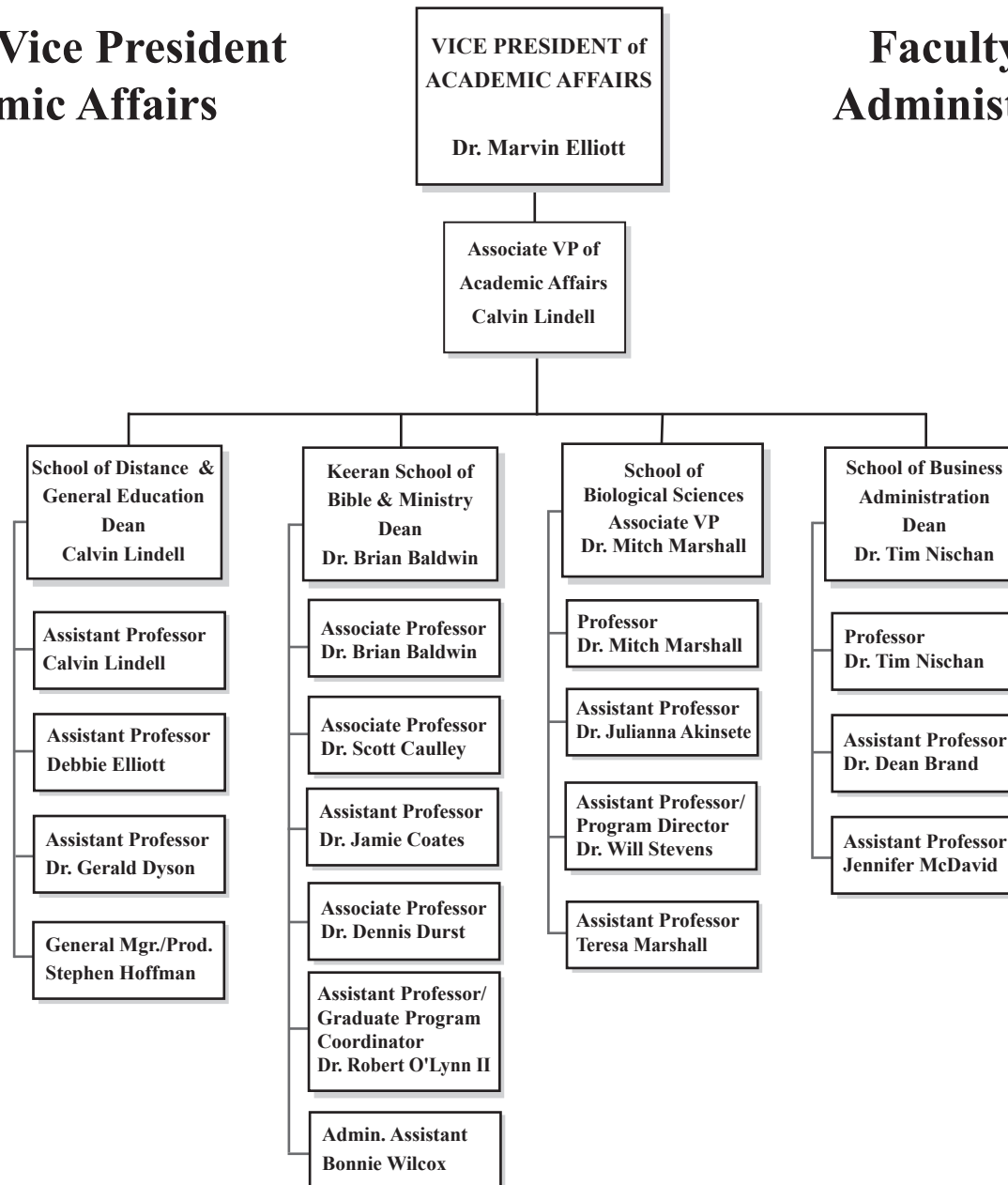
Office of the Executive Vice President & Vice President of Academic Affairs



KENTUCKY CHRISTIAN UNIVERSITY ORGANIZATIONAL CHART

Office of the Vice President of Academic Affairs

Faculty Members and Administrative Assistants



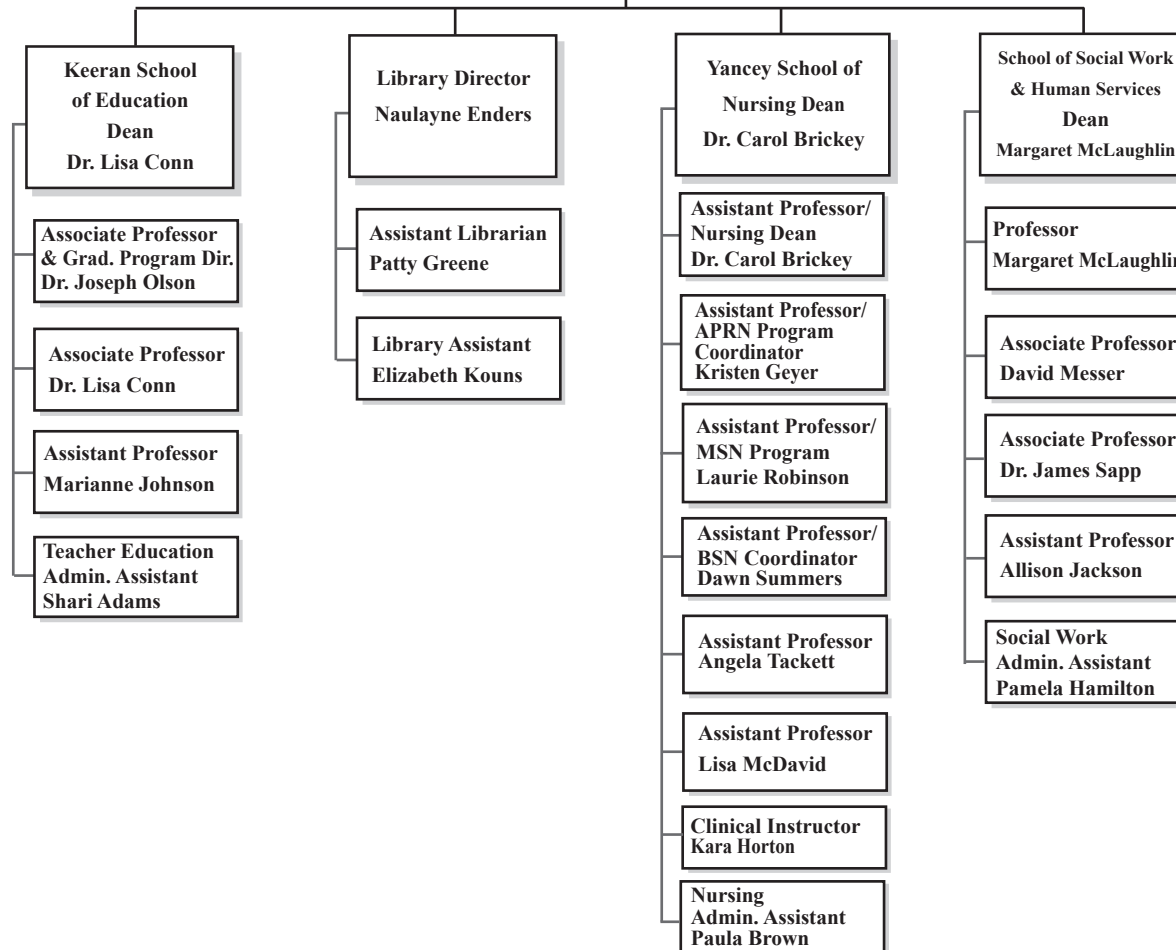
KENTUCKY CHRISTIAN UNIVERSITY ORGANIZATIONAL CHART

Office of the Vice President of Academic Affairs

**VICE PRESIDENT of
ACADEMIC AFFAIRS
Dr. Marvin Elliott**

Faculty Members and Administrative Assistants

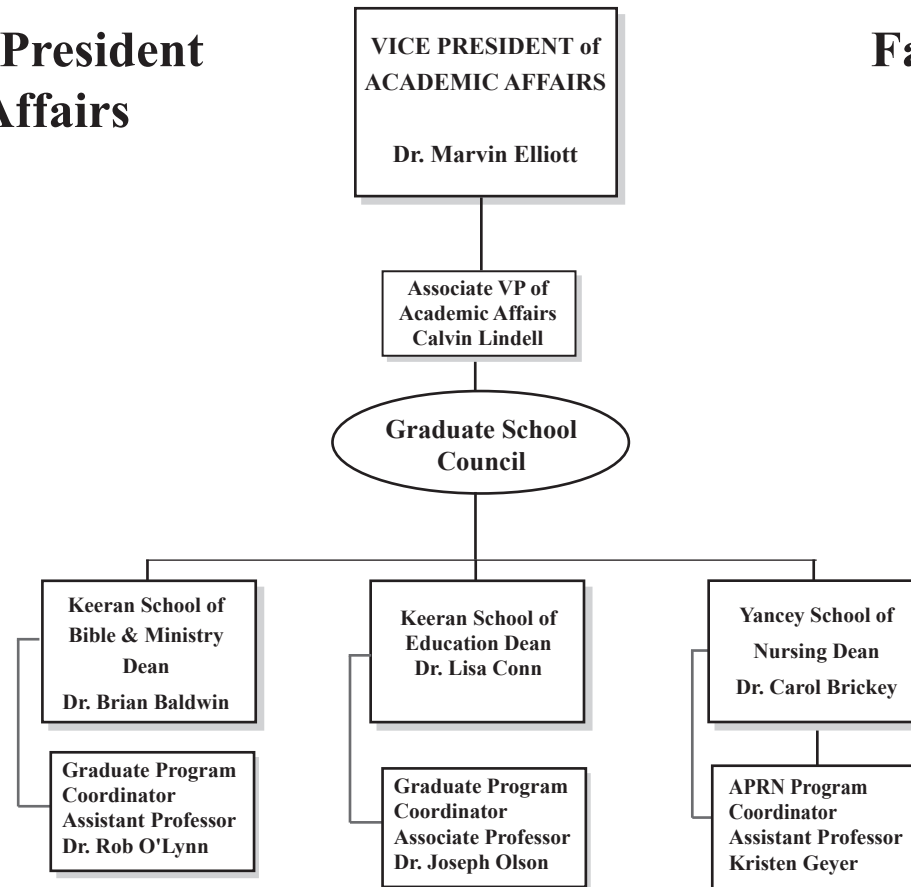
**Associate VP of
Academic Affairs
Calvin Lindell**



KENTUCKY CHRISTIAN UNIVERSITY ORGANIZATIONAL CHART

Office of the Vice President of Academic Affairs

Faculty Members



KENTUCKY CHRISTIAN UNIVERSITY ORGANIZATIONAL CHART

Athletic Director

