



Kentucky Christian University

ESTABLISHED 1919

DECEMBER 2014
ORGANIZATIONAL CHART



JUNE 2014 ORGANIZATIONAL CHART

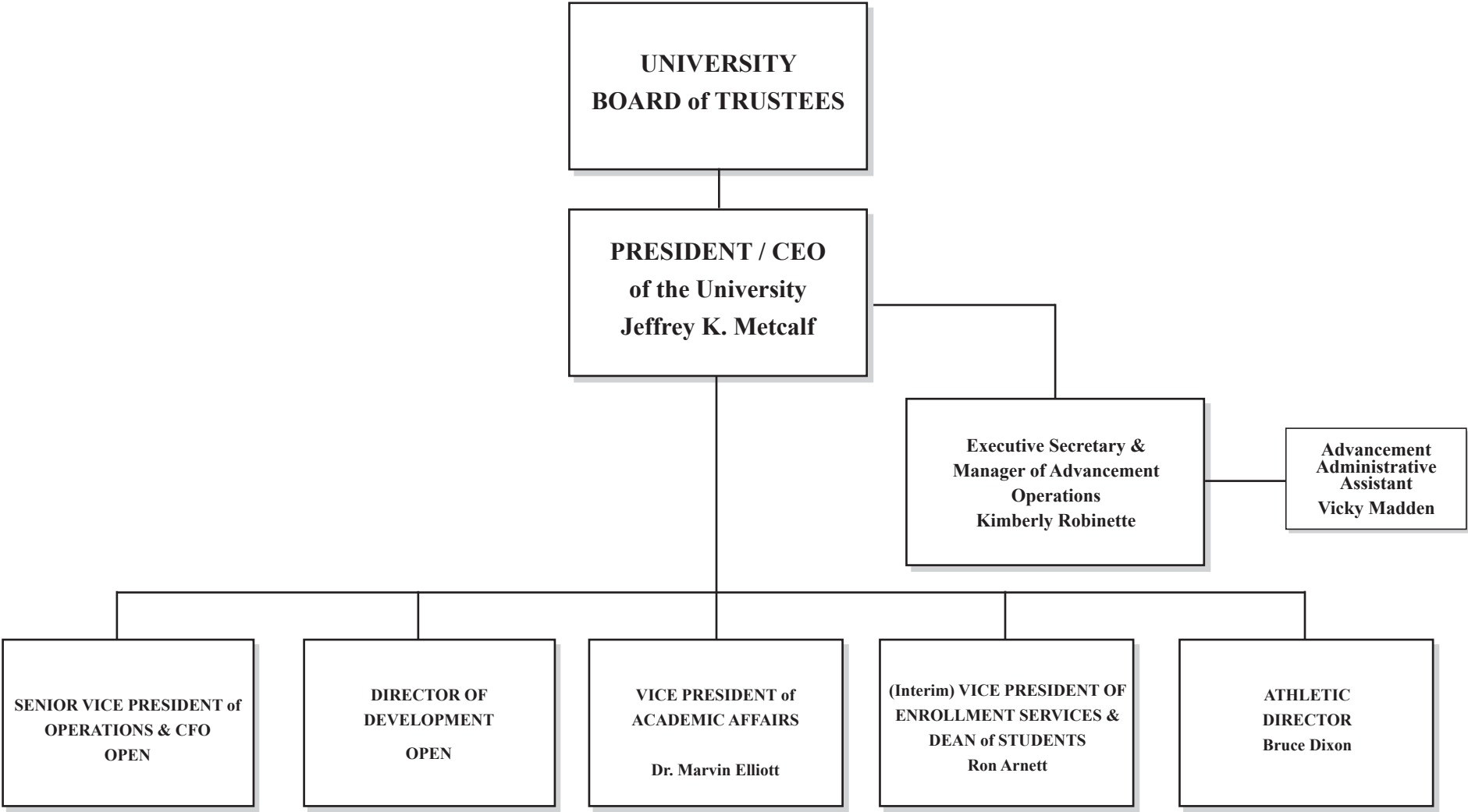
Table of Contents

Administrative Offices	3
Office of Senior Vice President of Operations & CFO (Business & Finance)	4-5
Office of the Vice President of Enrollment Services (Interim) - Dean of Students	6-7
Office of the Director of Development.....	8
Office of the Vice President of Academic Affairs - Faculty Deans, Schools, Departments, and Committees	9
Office of the Vice President of Academic Affairs - Faculty, Schools, Administrative Assistants	10
Office of the Vice President of Academic Affairs - Associate Vice President for Health Sciences	11
Office of the Vice President of Academic Affairs - Graduate School Program.....	12
Athletic Director & All Coaches	13

KENTUCKY CHRISTIAN UNIVERSITY

ORGANIZATIONAL CHART

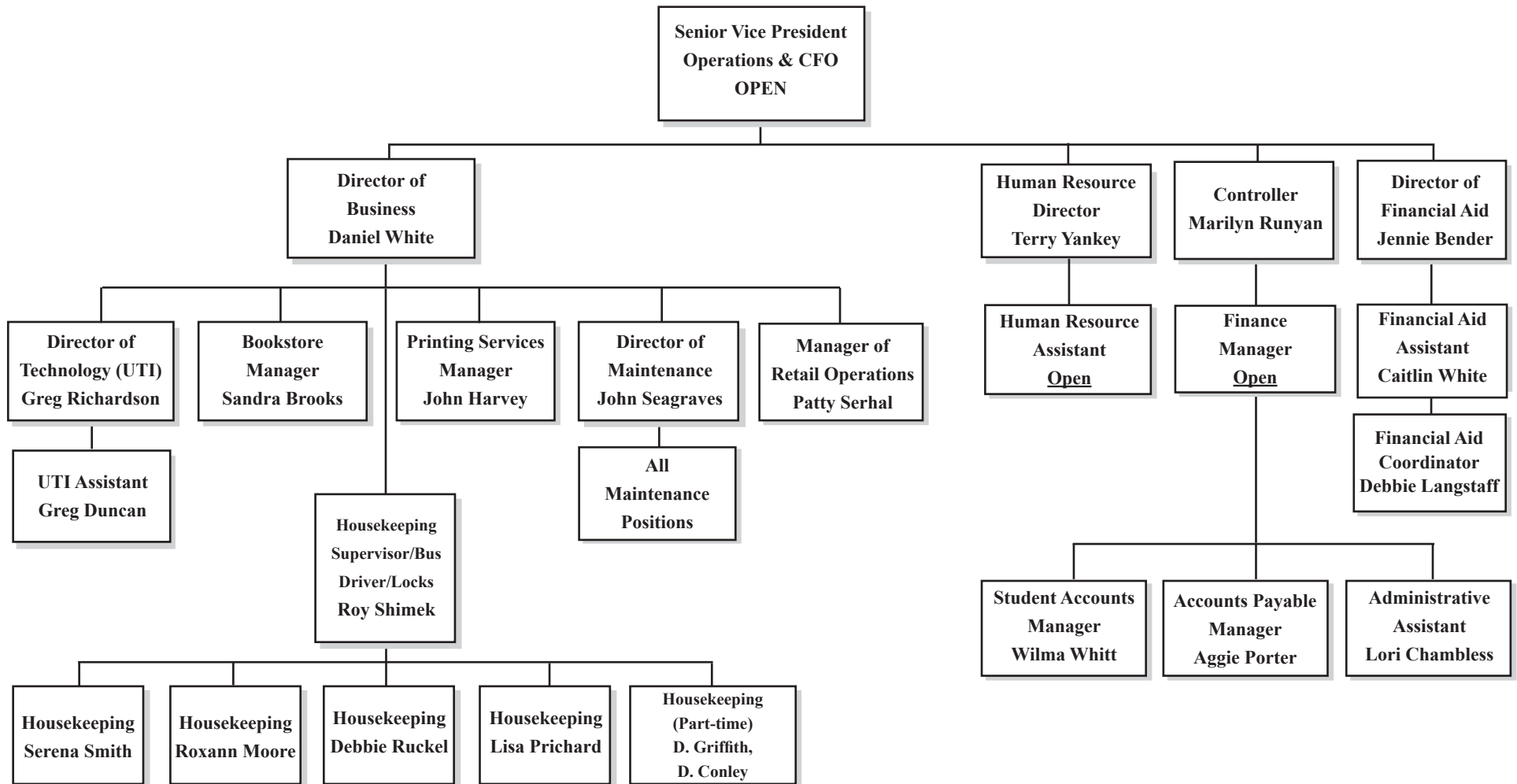
Administrative Offices



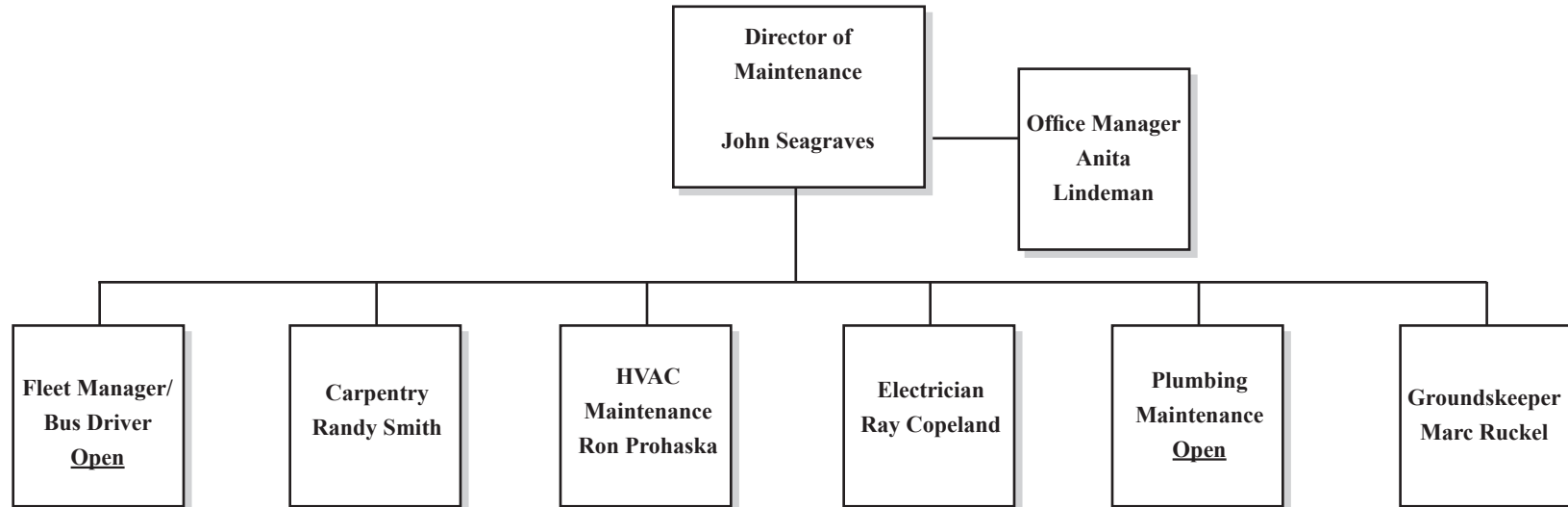
KENTUCKY CHRISTIAN UNIVERSITY

ORGANIZATIONAL CHART

Senior Vice President of Operations & CFO



KENTUCKY CHRISTIAN UNIVERSITY
ORGANIZATIONAL CHART
Office of the Senior Vice President of Operations & CFO
Director of Maintenance

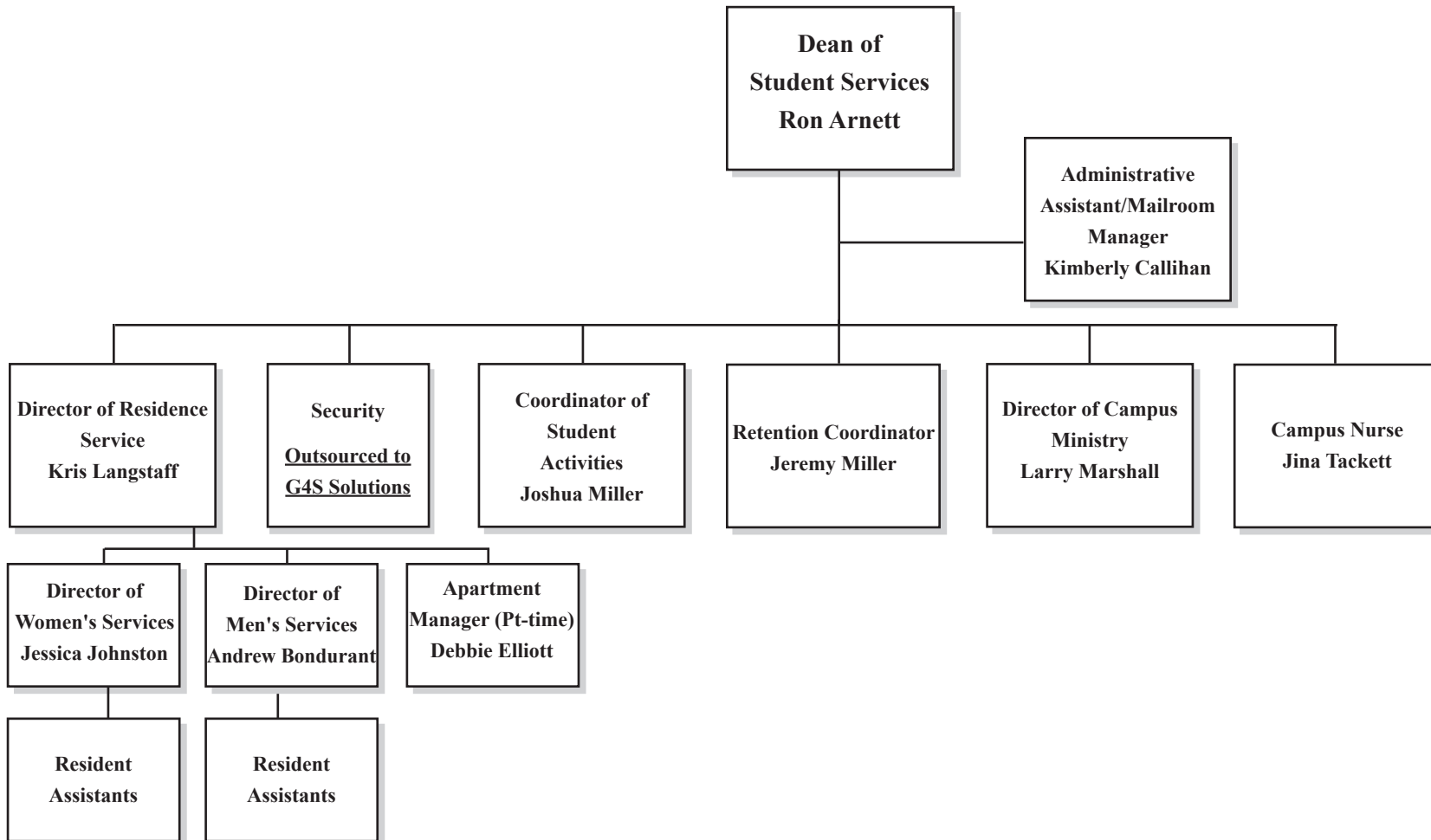


KENTUCKY CHRISTIAN UNIVERSITY

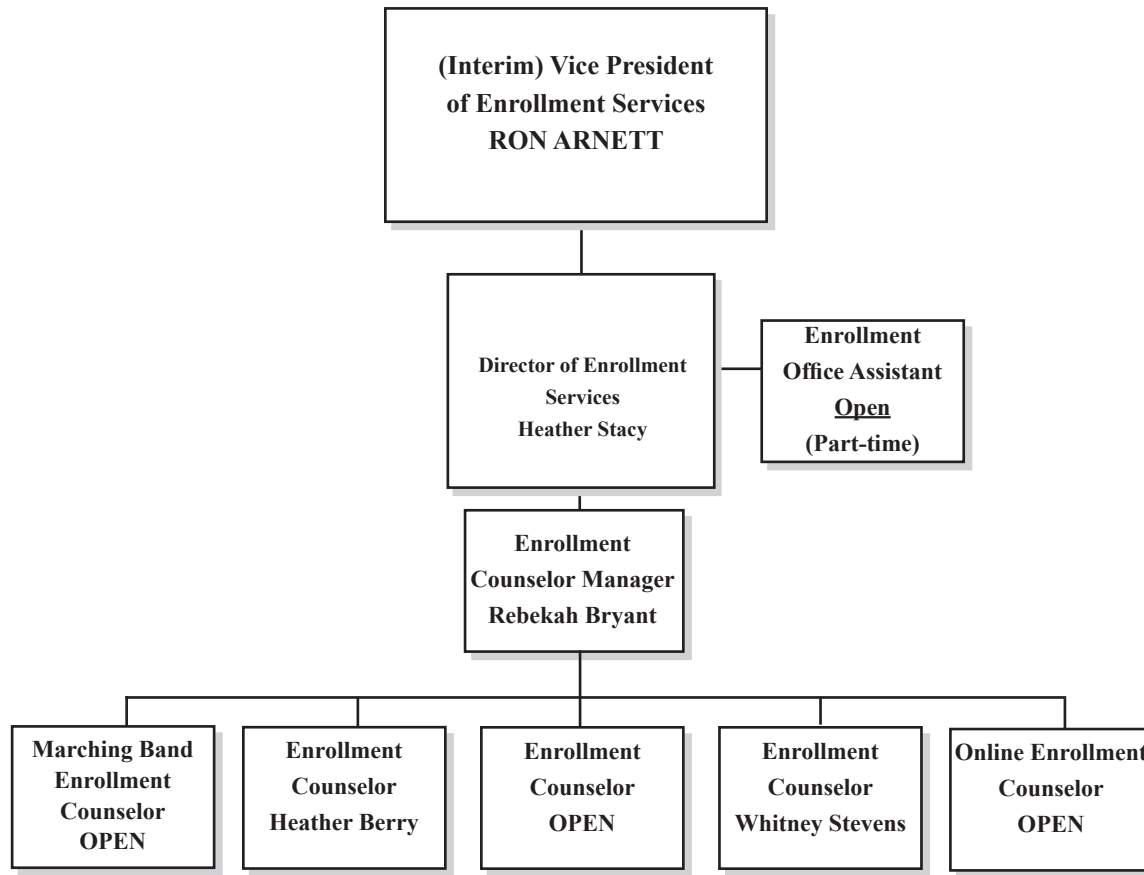
ORGANIZATIONAL CHART

Office of the Vice President of Enrollment Services

Dean of Student Services



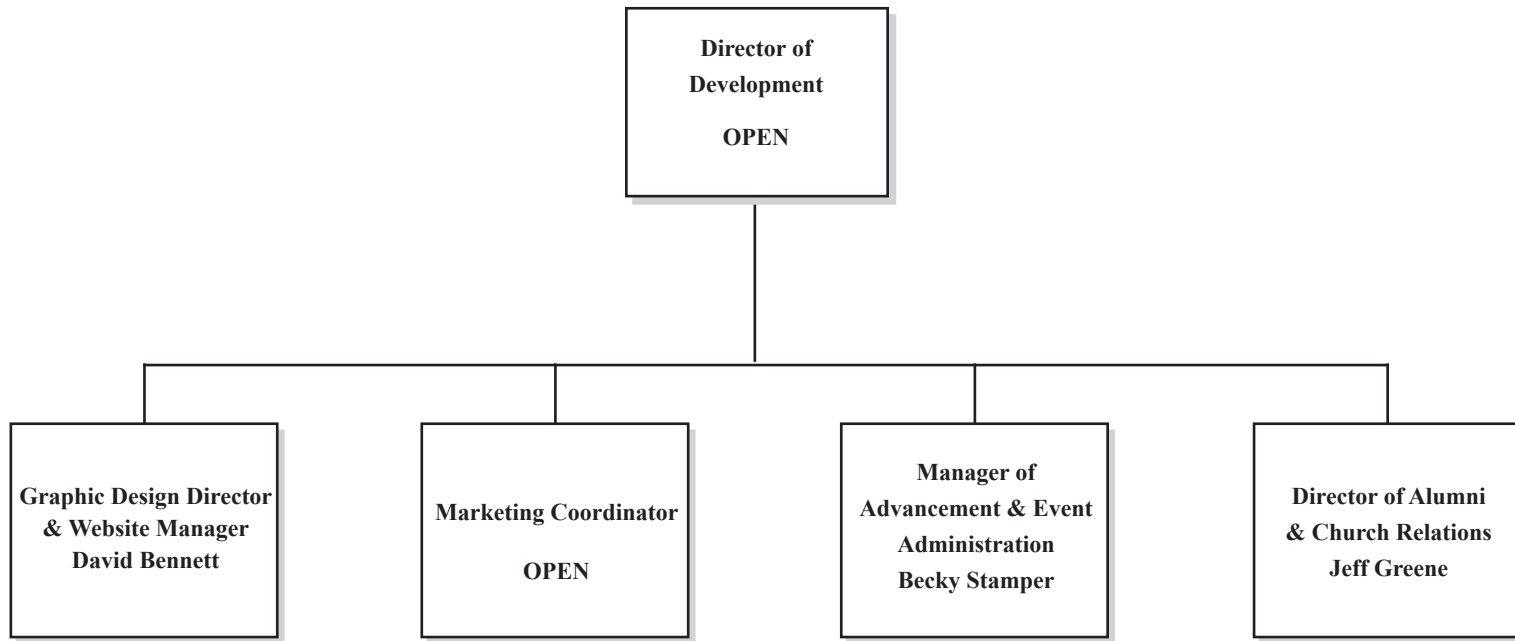
KENTUCKY CHRISTIAN UNIVERSITY
ORGANIZATIONAL CHART
Office of the Vice President of Enrollment Services
Director of Enrollment Services



KENTUCKY CHRISTIAN UNIVERSITY

ORGANIZATIONAL CHART

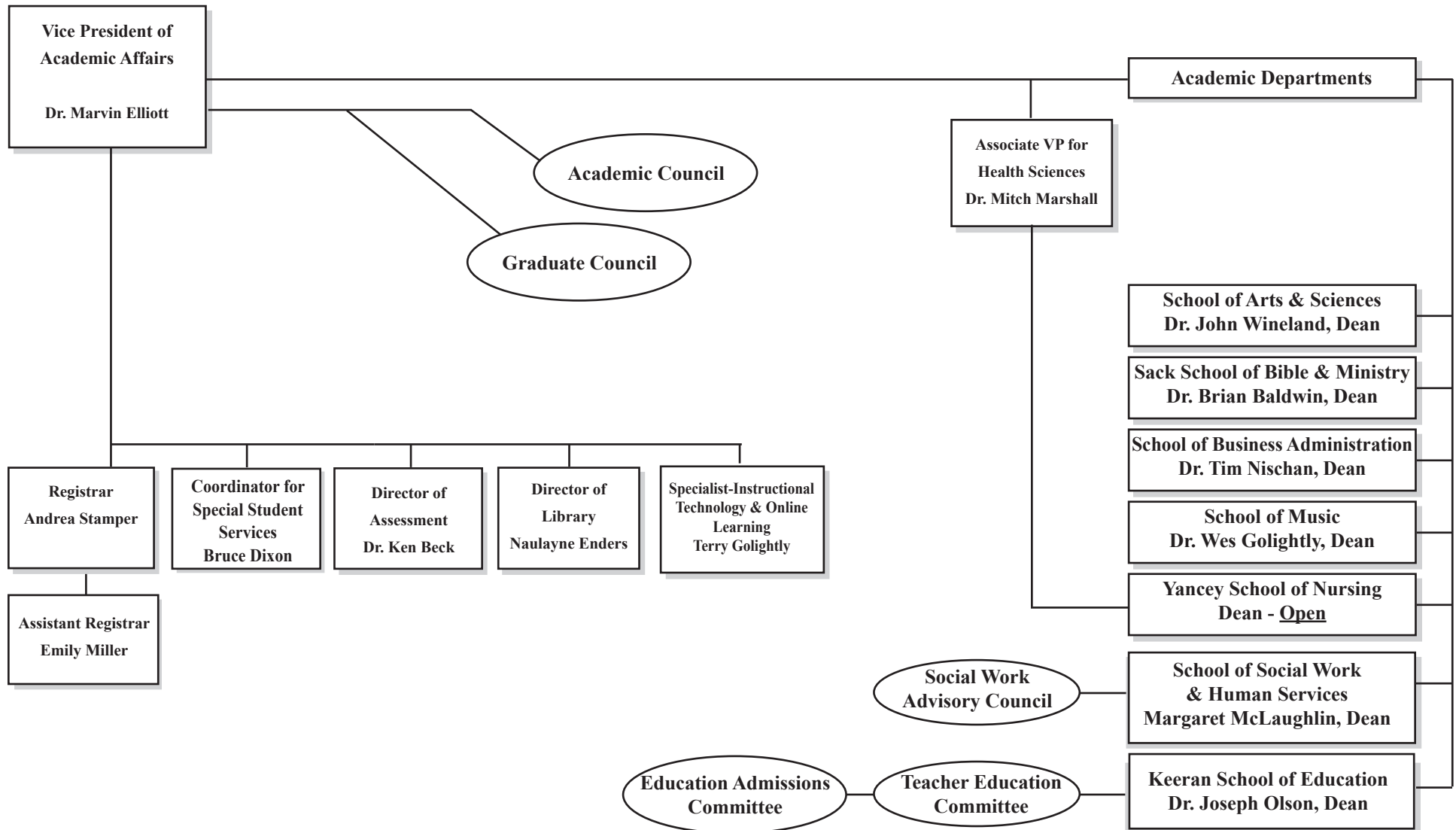
Director of Development



KENTUCKY CHRISTIAN UNIVERSITY

ORGANIZATIONAL CHART

Office of the Vice President of Academic Affairs



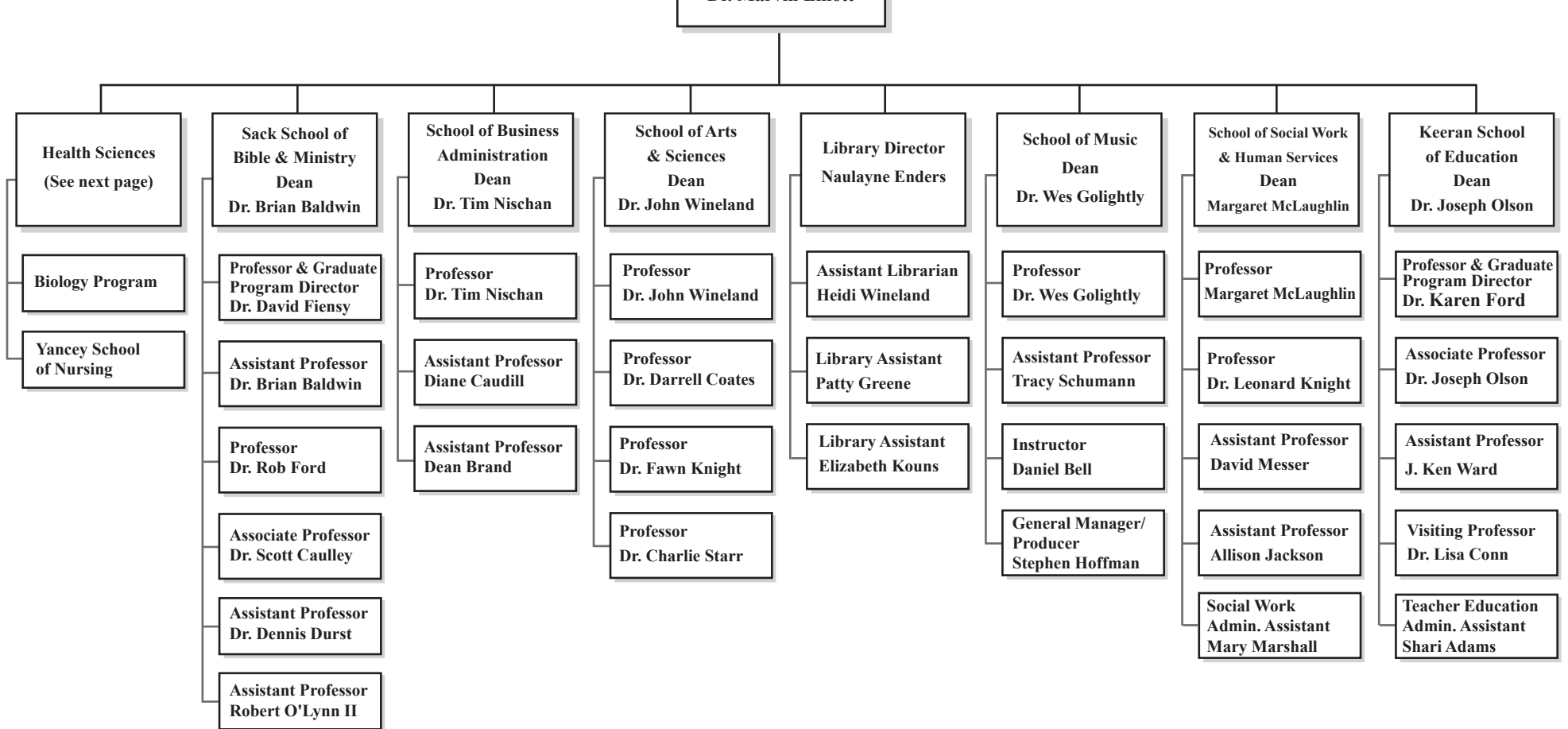
KENTUCKY CHRISTIAN UNIVERSITY ORGANIZATIONAL CHART

Office of the Vice President of Academic Affairs

VICE PRESIDENT of
ACADEMIC AFFAIRS

Dr. Marvin Elliott

Faculty Members and Administrative Assistants



KENTUCKY CHRISTIAN UNIVERSITY ORGANIZATIONAL CHART

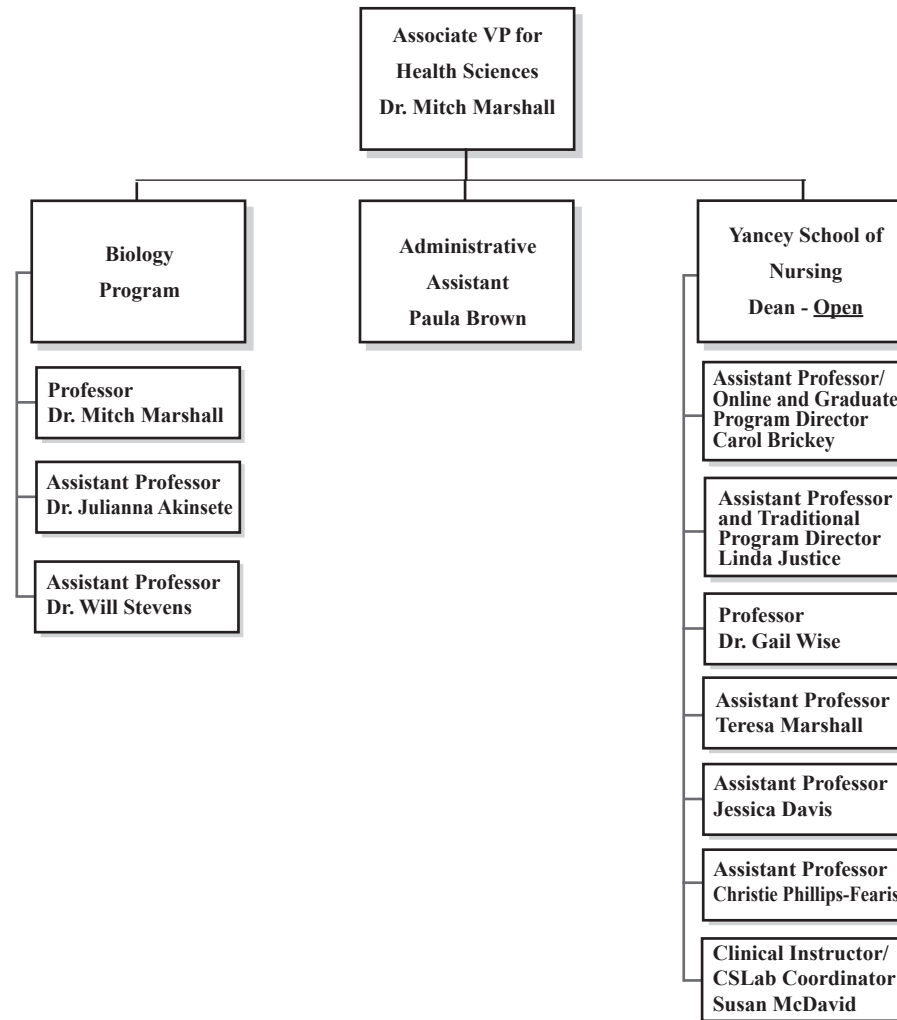
**Office of the Vice President
of Academic Affairs**

**VICE PRESIDENT of
ACADEMIC AFFAIRS**

Dr. Marvin Elliott

**Faculty Members and
Administrative Assistants**

HEALTH SCIENCES



KENTUCKY CHRISTIAN UNIVERSITY ORGANIZATIONAL CHART

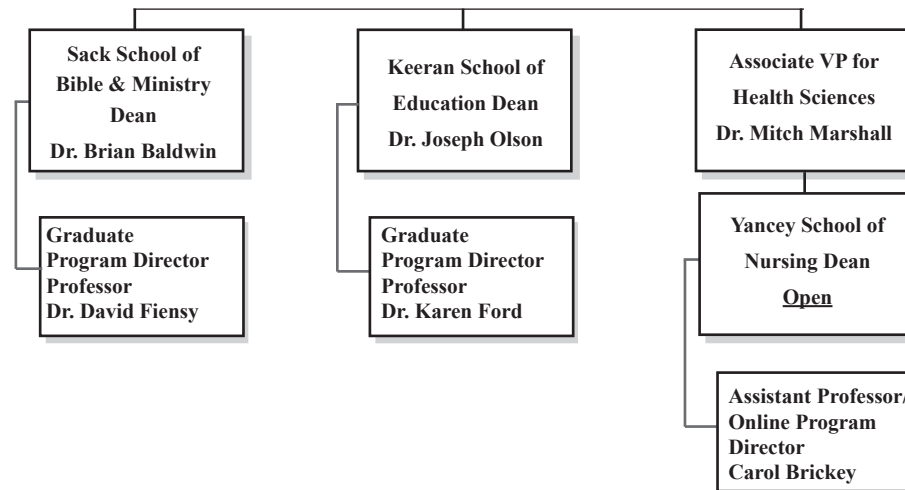
**Office of the Vice President
of Academic Affairs**

**VICE PRESIDENT of
ACADEMIC AFFAIRS**

Dr. Marvin Elliott

Faculty Members

GRADUATE SCHOOL PROGRAM



KENTUCKY CHRISTIAN UNIVERSITY

ORGANIZATIONAL CHART

Office of the Special Assistant to the President Athletic Director

